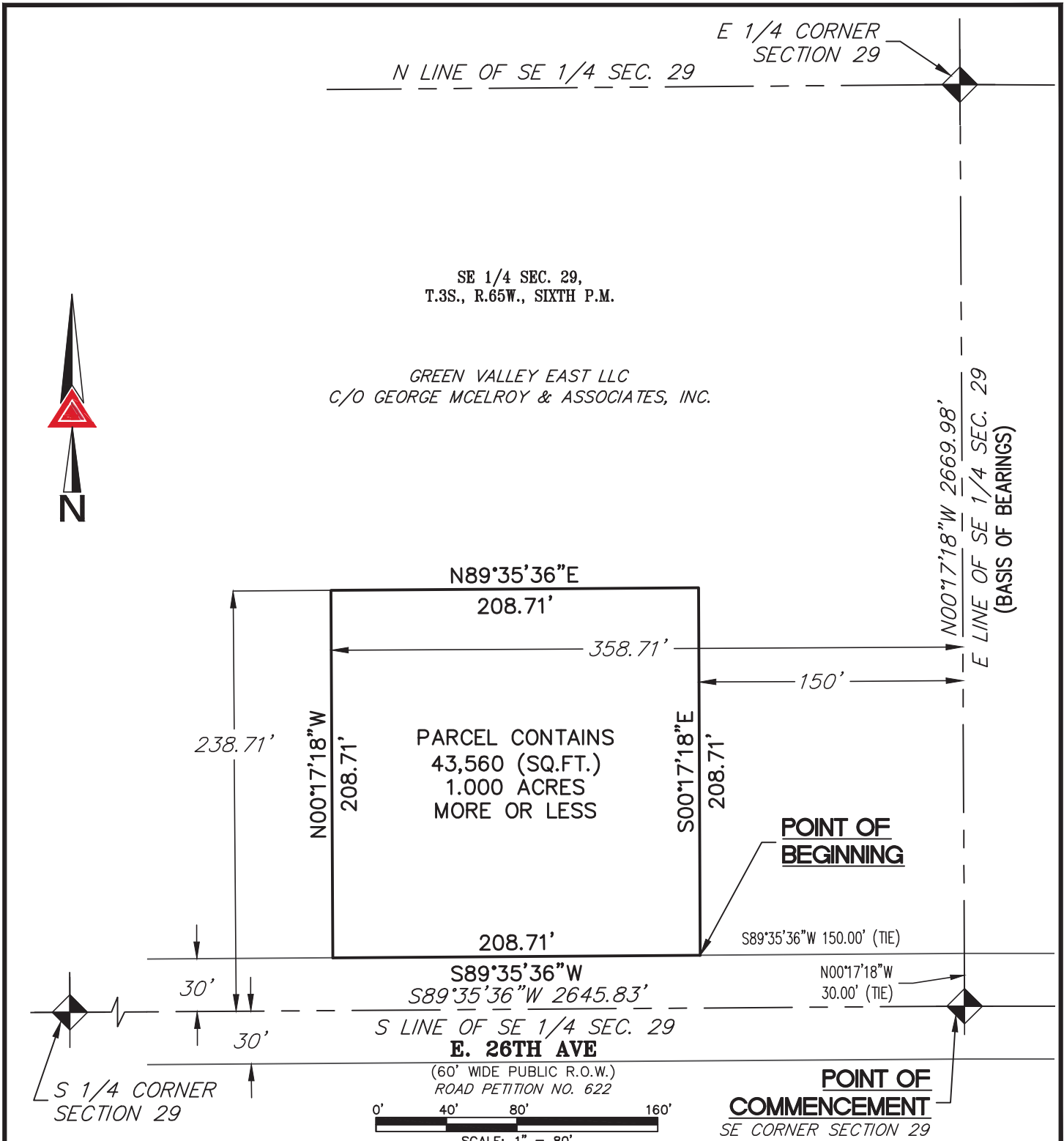


# ILLUSTRATION TO LEGAL DESCRIPTION



NOTE: THIS DRAWING DOES NOT REPRESENT A MONUMENTED LAND SURVEY AND IS ONLY INTENDED TO DEPICT THE ATTACHED LEGAL DESCRIPTION.

PATH: Q:132418-02\DWG\EXHIBITS\  
DWG NAME: Directors Parcel (AACMD)  
DWG: DED CHK: JRW  
DATE: 3/22/2019  
SCALE: 1" = 80'



**AZTEC**  
CONSULTANTS, INC.

300 East Mineral Ave,  
Suite 1  
Littleton, Colorado 80122  
Phone: (303)713-1898  
Fax: (303)713-1897  
[www.aztecconsultants.com](http://www.aztecconsultants.com)

## EXHIBIT

SE 1/4 SEC. 29, T3S, R65W, 6TH P.M.  
ADAMS COUNTY, COLORADO

JOB NUMBER 136618-02

2 OF 2 SHEETS