

SPECIAL DISTRICT PUBLIC DISCLOSURE DOCUMENT

ATEC METROPOLITAN DISTRICT NO. 1

As required pursuant to Section 32-1-104.8 of the Colorado Revised Statutes (“**C.R.S.**”) this Public Disclosure Document has been prepared by ATEC Metropolitan District No. 1 (the “**District**”) to provide information regarding the District.

DISTRICT’S POWERS

The powers of the District as authorized by Section 32-1-1004, C.R.S., and under its Service Plan, as approved by City Council of the City of Aurora (“**City**”) on August 6, 2018, are to provide for the acquisition, construction, installation, and completion of certain Public Improvements (which term is defined in the District’s Service Plan) and related operation and maintenance services within and without the boundaries of the District as such power and authority is described in the Special District Act, and other applicable statutes, common law and the Constitution, subject to the limitations set forth in the District’s Service Plan.

DISTRICT’S SERVICE PLAN

The District’s Service Plan, which can be amended from time to time, includes a description of the District’s powers and authority. A copy of the District’s Service Plan is available from the Division of Local Government in the State Department of Local Affairs (“**Division**”).

The ATEC Metropolitan District No. 1 is authorized by Title 32 of the Colorado Revised Statutes to use a number of methods to raise revenues for capital needs and general operations costs. These methods, subject to the limitations imposed by Section 20 of Article X of the Colorado Constitution (“**TABOR**”), include issuing debt, levying taxes, and imposing fees and charges. Information concerning District directors, management, meetings, elections, and current taxes are provided annually in the Notice to Electors described in Section 32-1-809(1), C.R.S., which can be found at the District office, on file at the Division, or on file at the office of the Clerk and Recorder of Adams County.

DISTRICT MAP

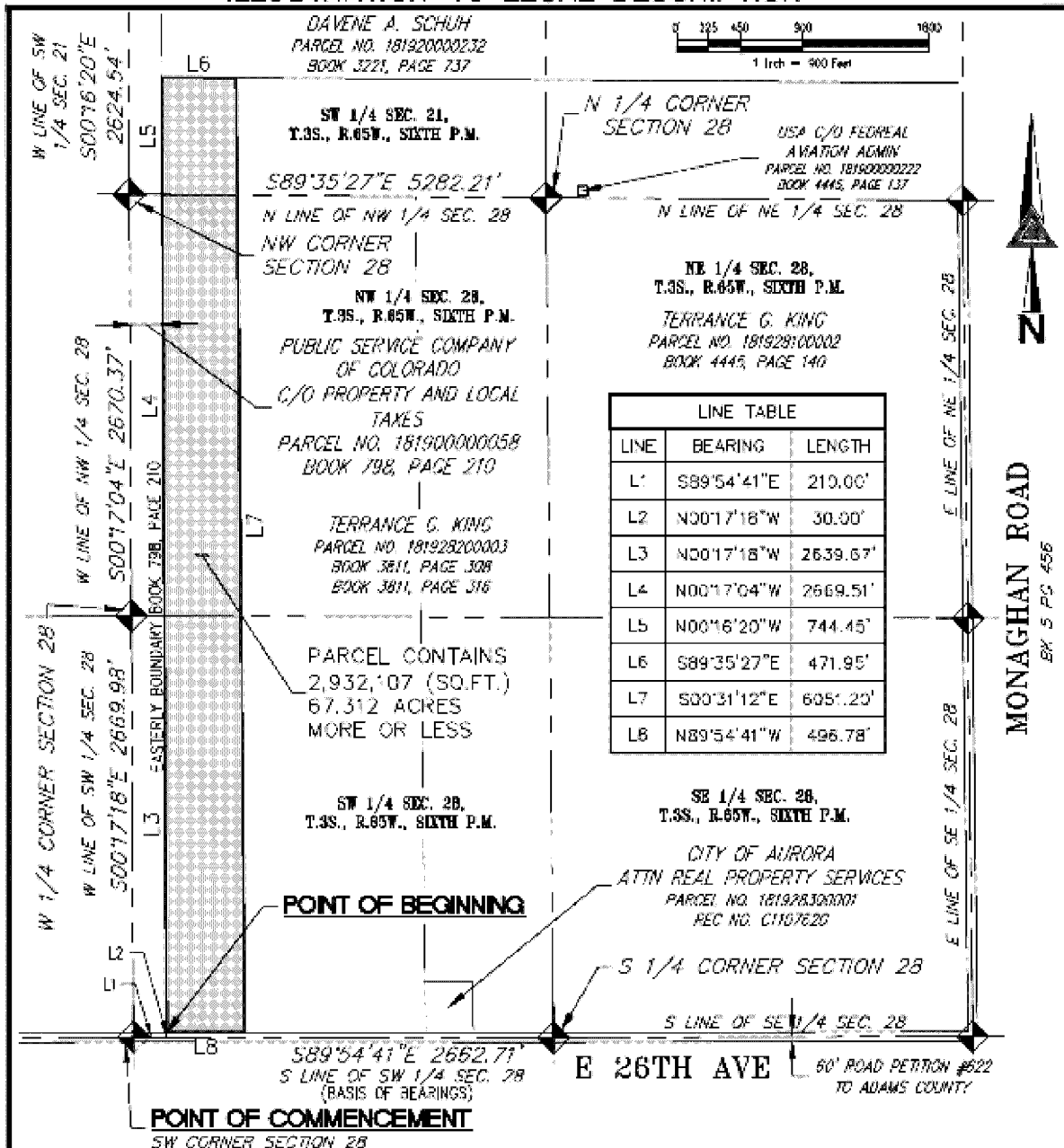
A map of the District’s boundaries is attached hereto as **Exhibit A**.

Dated November 19, 2019.

EXHIBIT A

District Map

ILLUSTRATION TO LEGAL DESCRIPTION



NOTE: THIS DRAWING DOES NOT REPRESENT A MONUMENTED LAND SURVEY AND IS ONLY INTENDED TO DEPICT THE ATTACHED LEGAL DESCRIPTION.

PATH: G:\32418-01\DWG\EXHIBITS\
 DWG NAME: Directors Parcel
 DWG: SJM CHK: DED
 DATE: 5/14/2016
 SCALE: 1" = 900'



EXHIBIT
 W2 SEC. 28, & SW 1/4 SEC. 21, T3S, R65W, 6TH P.M.
 ADAMS COUNTY, COLORADO
 JOB NUMBER 132418-01